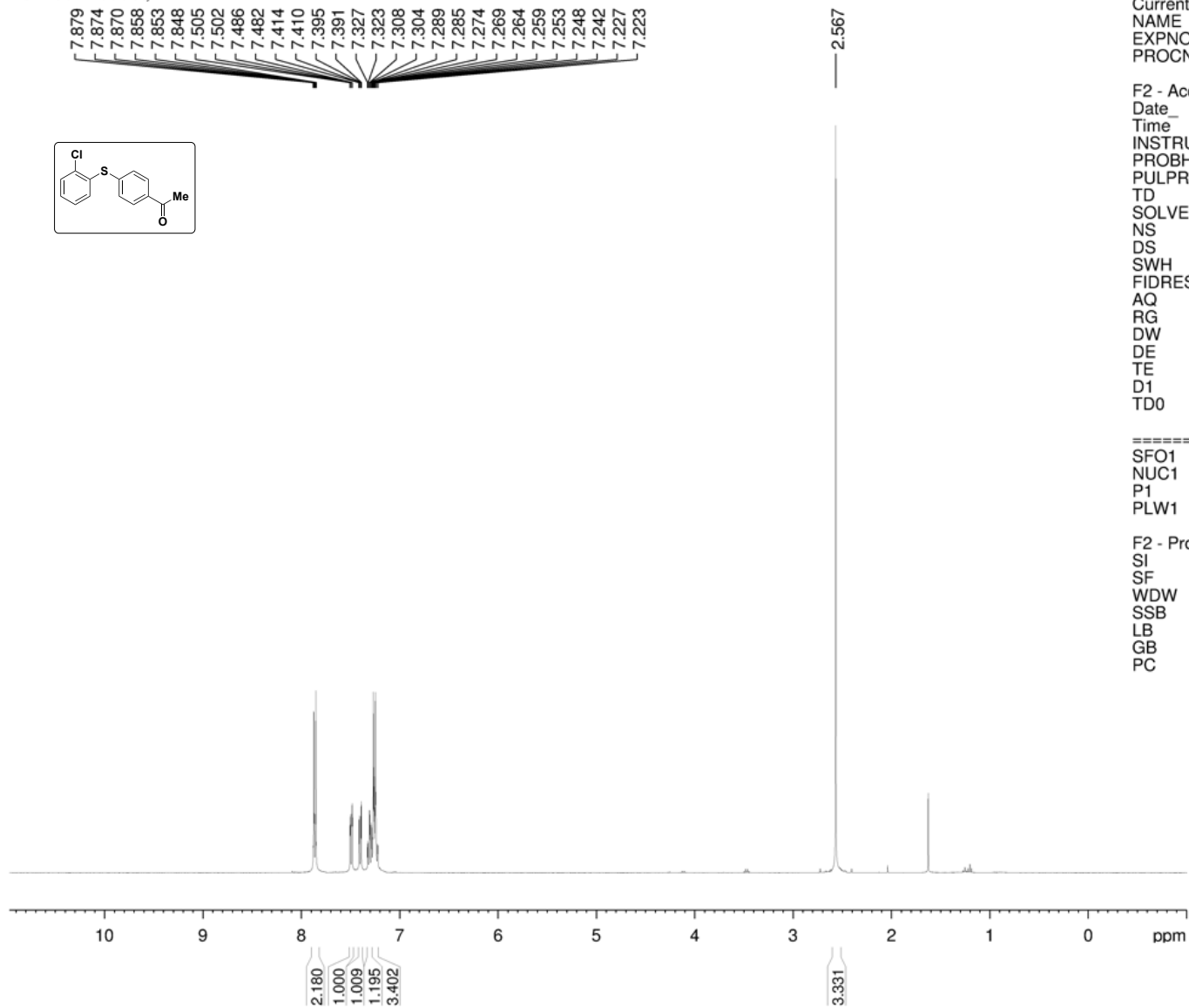
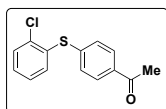


Purified Product, 1H NMR

7.879  
7.874  
7.870  
7.858  
7.853  
7.848  
7.505  
7.502  
7.486  
7.482  
7.414  
7.410  
7.395  
7.391  
7.327  
7.323  
7.308  
7.304  
7.289  
7.285  
7.274  
7.269  
7.264  
7.259  
7.253  
7.248  
7.242  
7.227  
7.223



Current Data Parameters  
NAME Org Syn Check  
EXPNO 260  
PROCNO 1

F2 - Acquisition Parameters  
Date\_ 20230511  
Time 14.39  
INSTRUM av400  
PROBHD 5 mm PABBO BB/  
PULPROG zg30  
TD 52882  
SOLVENT CDCl3  
NS 8  
DS 0  
SWH 8012.820 Hz  
FIDRES 0.151523 Hz  
AQ 3.2998369 sec  
RG 155.85  
DW 62.400 usec  
DE 6.50 usec  
TE 297.6 K  
D1 2.00000000 sec  
TD0 1

===== CHANNEL f1 =====  
SFO1 400.1324008 MHz  
NUC1 1H  
P1 15.00 usec  
PLW1 13.00000000 W

F2 - Processing parameters  
SI 65536  
SF 400.1300184 MHz  
WDW EM  
SSB 0  
LB 0.30 Hz  
GB 0  
PC 1.00